

# Arrow Net Hooks For Metal Goalpost Net Fixing

Made in white industrial nylon for metal goalposts.

IF YOUR GOALPOSTS ARE NOT ALREADY DRILLED, DRILL POSTS USING A **8.8 mm** DRILL BIT. APPROX 12" (300mm) APART.

INSERT NET FIXINGS INTO HOLES ON CROSSBAR AND UPRIGHT SECTIONS.

A LOCKING PIN IS LOCATED ON THE TOP OF THE NET FIXING.

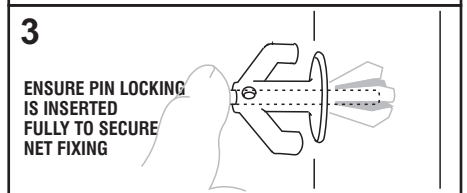
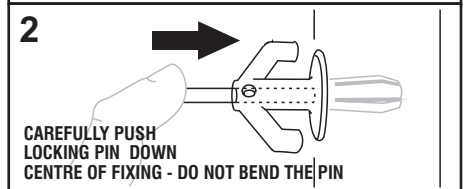
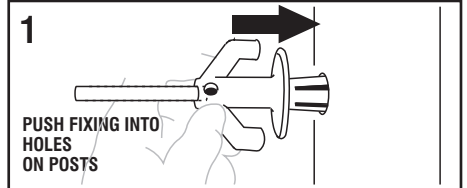
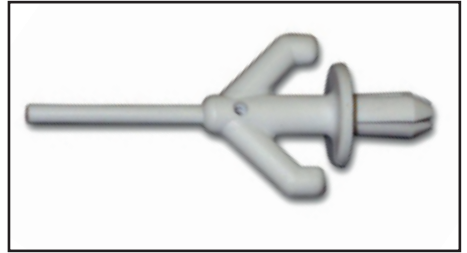
DO NOT THROW THE LOCKING PINS AWAY

PUSH LOCKING PIN FULLY INTO THE NET FIXING, THIS WILL SECURE IT IN PLACE.

**IMPORTANT** - THE BLACK PINS ARE MALLEABLE AND THEY MAY BEND - DO NOT BEND THE PINS.

YOU MUST CAREFULLY INSERT THE PIN USING YOUR FINGERS AS FAR INSIDE THE NET FITTING. ONCE INSERTED MOST OF THE WAY INSIDE YOU CAN THEN USE A MALLET TO HIT THE PIN FULLY DOWN TO LOCK.

PLEASE NOTE: ARROW NET FIXINGS SHOULD ONLY BE USED ON BACK OF THE UPRIGHT POSTS AND CROSSBARS ON FOOTBALL GOAL POSTS - THIS IS TO ENSURE THE FOOTBALL DOES NOT STRIKE THE FIXINGS. DO NOT USE ARROW HEAD NET FIXINGS ON THE GROUND FRAME OF GOALPOSTS - WE SUPPLY SEPARATE GROUND FRAME NET FIXINGS OR SAFETY NET TIES FOR GROUND FRAMES



# Arrow Net Hooks For Plastic Goalpost Net Fixing

Made in white plastic for uPVC Goalposts

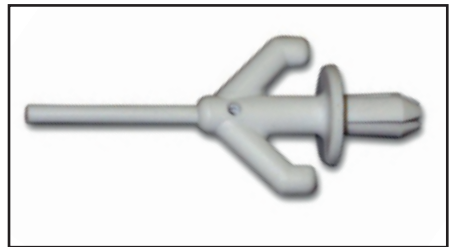
IF YOUR GOALPOSTS ARE NOT ALREADY DRILLED, DRILL POSTS USING **8.6mm** DRILL BIT. APPROX 12" (300mm) APART.

INSERT NET FIXINGS INTO HOLES ON CROSSBAR AND UPRIGHT SECTIONS.

A LOCKING PIN IS LOCATED ON THE TOP OF THE NET FIXING.

DO NOT THROW THE LOCKING PINS AWAY.

PUSH LOCKING PIN FULLY INTO THE NET FIXING, THIS WILL SECURE IT IN PLACE.



NOTE: IF NET HOOKS WILL NOT STAY IN PLACE WHEN THE SECURING PIN IS INSERTED, THE PIN MAY HAVE BECOME WORN, AS A TEMPORARY MEASURE YOU CAN ADD TAPE AROUND THE MIDDLE OF THE PIN THIS SHOULD HELP TIGHTEN THE PIN INSIDE THE FIXING.

**MADE IN ENGLAND** [www.itsagoal.net](http://www.itsagoal.net)

WORLDWIDE © COPYRIGHT 2001 ITSA Goal Posts Ltd, ALL RIGHTS RESERVED, ITSA GOAL NET FIXING IS A REGISTERED DESIGN NO. 000000



NOT SUITABLE FOR CHILDREN UNDER 36 MONTHS UNTIL ASSEMBLED DUE TO SMALL PARTS.

